

Prisma

COLLEZIONE 2009
2009 COLLECTION

Il design particolarmente eclettico e inconsueto, caratterizzato da un'impugnatura di forma romboidale, ne fa il complemento d'arredo ideale per gli ambienti più moderni.

The particularly eclectic and unusual design, characterized by the rhomboid shaped hand-grip, make it the ideal furnishing accessory for the most modern environments.

ONLY MADE IN ITALY





CR cromo lucido
polished chrome



CS cromo satinato
satin chrome



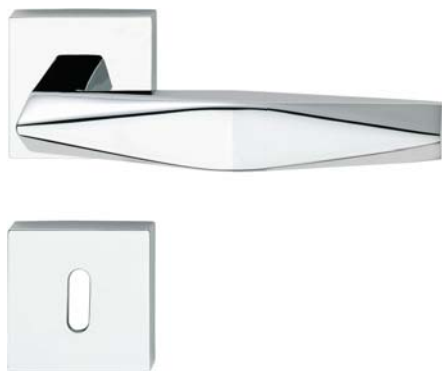
MC cromo + cromo sabbiato
chrome + matt chrome mix



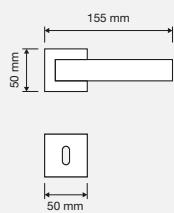
OL ottone lucido verniciato
polished brass



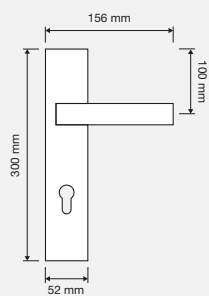
OM oro + oro sabbiato
polished gold + matt gold mix



COD. 1280 RB 019



COD. 1281 PL



COD. 1280 SK

